



# Between Turns

Michigan Association of Woodturners

A chapter of the American Association of Woodturners

VOLUME 22, ISSUE 1

JANUARY 2010

CONTACT US:

President:

Tom Mogford

810-629-6176

Vice President:

Pete Buccellato

248-634-7622

Treasurer:

Tim Morris

810-229-7156

Secretary:

Jeff Scott

734-595-0215

Librarian:

Tim Leright

734-595-0223

INSIDE

THIS ISSUE:

January's Meeting	1
Show-N-Tell Table	2
Marbling Demo	3
Mentors	4
Holiday Pictures	5
AAW Call for Submissions	
Submitted Articles -Harvesting Wood	6
MAW Newsletter & Website Submissions	6
Emails	7

## Welcome to 2010...

For January's demonstration Bill Magee and Bob Roehrig shared what they learned from a marbling presentation at the 2009 Ohio Valley Woodturners Guild Symposium. This was an interesting hands-on demonstration.



The Mentoring Workshop program started this month. Mentoring Workshops will typically be held the second Saturday following that month's meeting. These dates are subject to change just like the normal meetings based on Holidays and

### Special Events.



We will be having a workshop to go over the video equipment before the start of the February meeting. If you would like to learn how to set up and operate the video equipment Jeff will be at the meeting at noon.

The Binh Pho Demo will be held on May 15th. A Hands-On Workshop will be held on May 16 and 17th. Please make sure that you pre-register for the Demo and Workshop. Space is

limited for the Hands-On Workshop.

As a friendly reminder 2010 dues are past due. Please make sure to see Tim Morris at the February meeting.

Be sure to check out Bob Roehrig's article in Woodturning Designs Spring 2010 Issue on page 40.

-Jeff



Ruby's Marbled Button.

## Upcoming Dates

### Tentative 2010 Meetings :

February 7	March 7	April 11	May 1
June 6	July 11	August 1	September 12
October 3	November 7	December 5	

- Meetings are typically held monthly on the first Sunday of each month from 1:00 p.m. -

3:00 p.m. at Paul Beemann's 2075 East Rattalee Lake Rd Holly MI 48442.

- 2010 Dues are past due.

- Binh Pho Demo on May 15

Members \$40.00 in advance - \$45.00 at the door

Non-Members \$50.00 in advance - \$55.00 at the door

-Binh Pho Hands-On Workshop May 16, 17 Pre-registration Required

-The Wood Show in Taylor February 26-28

# Show and Tell Table



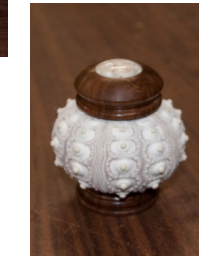
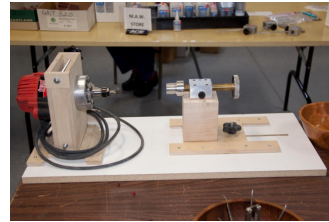
Tom providing this months critique.

Nut Bowl - Bob Roehrig

Natural Edge Bowl and Bottle Vases - Dan Sykes



Glue Bottle Opener, Auto Finish Swirler - Ruby Cler  
Snowman Head Ornament - Jeff Scott  
Threaded box and Threading Jig—John Irvine



Sea Urchin Boxes - Bob Roehrig

Sea urchin Boxes—Bill Magee

Snowman Ornament—Carl Pardy

Please make sure to sign the show and tell sheet so credit can be given.





## January's Marbling Demo...

Marbling provides an interesting alternative to accent or highlight a piece that is turned out of a plain looking piece of wood.

Prior to the demonstration Bill and Bob turned a number of "buttons" from pine. Pine is a nice wood for marbling as it sands smooth and is bright without much figure. The buttons were sprayed with a mixture of Alum and water mixed to the directions that come with your Alum. This batch was mixed at one rounded teaspoon per cup of water.

When you are ready to start your marbling you can mix your "size". Size is created by mixing Carrageen and water. This brand of Carrageen is mixed at two tablespoons per gallon of water.

The "size" is poured into a container deep and wide enough to submerge the piece to be marbled along with the displaced "size". This container is called a "frame"

Acrylic paint is floated into the tray via a eye dropper or flicked from a paint brush. After several drops of varying colors have been added to the "frame" they can be swirled to form a swirling design. Acrylic air brush paints were used for the demo.

The button is then swooped into the "size" to apply the paint and "size" to the entire surface. The button is then dipped in water to remove the alum so the paint will adhere to the wood. You can then let the piece air dry or dab with a paper towel. Do not wipe the water off or you will smear the paint.



### Resources:

2009 Ohio Valley Woodturners Guild Symposium Hand-out: **MARBELING on Wood –HOW TO** by Carole Floate.

**The Ultimate Marbling Handbook** by Diane Maurer-Mathison.

Information about dyes: [www.earthguild.com/products/dyes/marble.htm](http://www.earthguild.com/products/dyes/marble.htm).

Hollanders of Ann Arbor local source for supplies: [www.hollanders.com](http://www.hollanders.com)

# Demonstrators Wanted



Anyone willing to demonstrate at the monthly meeting can contact Tom or Pete to schedule.

We have a number of talented members, so please feel free to share your talents with the club. There are some really interesting projects that members bring in each month for the show and tell table. Many of the club members would be interested in seeing how these projects are created.



*Ask about the Hands-On Mentor Workshops?*

## MAW Mentors

If you would like help getting started in woodturning or help with working out a problem, feel free to call any of the names listed. As always, there is no charge to members of the Michigan Association of Woodturners.

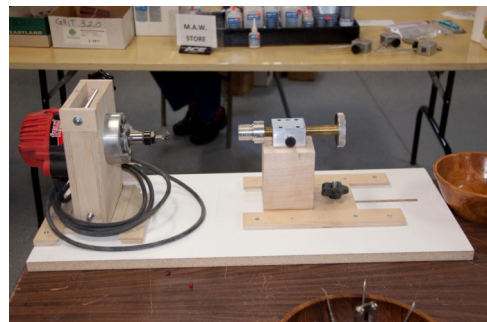
Tom Mogford .....	810-629-6176
Pete Buccellato .....	248-634-7622
Bill Magee (Pen Turning) .....	734-981-6117
John Becker (Mugs, Goblets, & Pipes) ...	248-851-0437
Gary Smith .....	810-636-7167
Herman Spaeth .....	248-486-4720
Ruby Cler .....	519-945-0647

## Photo's

Photographs for this months "Between-Turns" were provided by Jeff Scott and Carl Pardy.

If you have digital photo's that you would like to have considered for use in the newsletter, please send

them to the editor at: [Jeffatwayne@yahoo.com](mailto:Jeffatwayne@yahoo.com)



# AAW still accepting submissions for the 2010 Connecticut Symposium...

## Call for Entries

The AAW's 2010 exhibition is "Maple Medley - An Acer Showcase," which will be on display at the Hartford, Connecticut symposium June 18-20.

**The deadline for entering this exhibit is February 8, 2010**

They are looking for pieces that are at least partially turned and contain Acer the genus of wood called Maple.

Link for Exhibit Information:

[http://www.woodturner.org/sym/sym2010/Maple/call\\_for\\_entry\\_maple.pdf](http://www.woodturner.org/sym/sym2010/Maple/call_for_entry_maple.pdf)

Link for Submission Information:

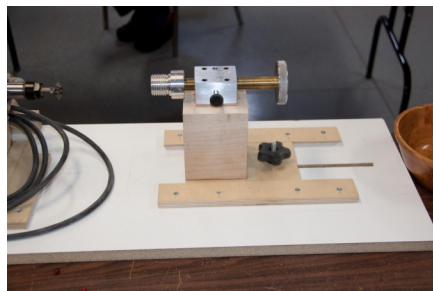
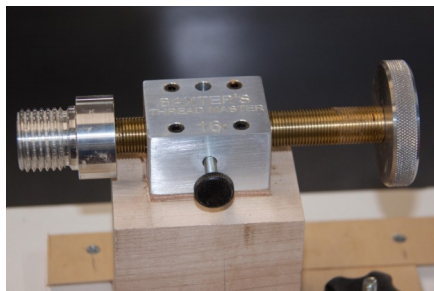
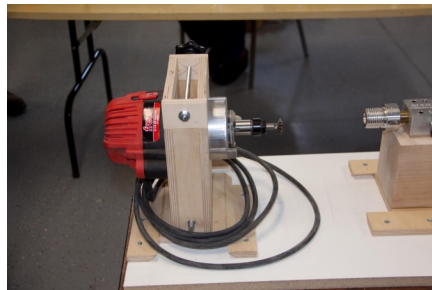
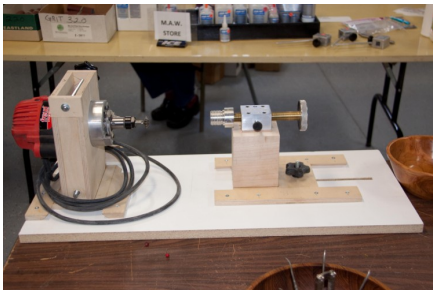
<http://www.woodturner.org/sym/sym2010/Maple/>

## Carl Pardy sent in some more pictures from the Holiday Potluck...



## John Irvine's Threading Jig...

Several People have asked to see pictures of John Irvine's Threading Jig, so here are a few more. John used the Baxter Thread Master for his thread control. <http://bestwoodtools.stores.yahoo.net/bathma.html>



## Submitted Article... -Harvesting Wood

Recently, my neighbor's tree was taken down and of course, I was given the bulk of the wood, even though I don't need it. As I was harvesting the wood, it occurred to me, that many new turners don't realize that wood does go bad, if it is not treated and prepared right away. This is a technique I learned many years ago, which has worked well for me. I am not saying, it is the only way to go about working with green wood.

The first task is to saw the logs into lengths a few inches longer than their diameters. After that, the logs are sawn longitudinally, so that a 2 - 3" section in the very center is removed. The reason, for removing the pith area that wide, is to prevent and reduce cracking. If it is not done right away, you will see cracks start to radiate out from the pith. Left over time, these cracks will continue to spread until the piece of wood is virtually useless for anything other than firewood. Cracks will also spread out from branches.

Once the half logs are formed, I decide which ones I will be using for bowls. I then use circle templates of varying diameters and cut the pieces round. This can be done with a chainsaw or on a band saw. If I am not going to get at the pieces for a while, I then coat the exposed wood with the liquid wax and put them in the garage. (I don't have room for a car in my garage.)

As soon as possible, I take the round blanks and rough turn the bowls to a good inch thick. If there is a branch or bark incursion on the piece, I will often put some thin CA glue in that area to help keep the cracking to a minimum. Then I coat them totally with the wax sealer and put them in the garage for a year. It takes wood approximately one year per inch to dry. A year later, I go back and finish turn the pieces.

Pieces I am not going to make bowls from, I trim into rectangular or square lengths. I then coat them with wax and put them away until I have a need for them. Occasionally, I will turn them round leaving tenons on each end, and then wax the pieces.

I hope this helps some of you get full use of wood you harvest yourself.

Ruby Cler

## The MAW is accepting submissions for the Club Newsletter and Website...

What would you like to read about in the club's newsletter "Between Turns"?

What would you like to see on the club's website <http://www.michiganwoodturner.org>?

If you are willing to write an article for submission please let Jeff know. Possible topics: woodturning, metal turning, wood-working, product reviews, or instructions for your latest project.

With your help we can help make the newsletter and website a better resource for our members.

Thank you.

Jeff- [jeffatwayne@yahoo.com](mailto:jeffatwayne@yahoo.com)



## January's Mail Bag...

From Bob Roehrig:

### For Sale



Sea Urchin shells. Great for making ornaments

\$2.50 each

Call Bob Roehrig @ 810-750-9132

Or Email @ [rroehrig@charter.net](mailto:rroehrig@charter.net)

From Clay Johnson at Choice Woods: [www.choice-woods.com](http://www.choice-woods.com) 2801 S. Floyd Street Louisville, KY 40209

Trent Bosch Hands on classes.

Trent Bosch will be here February 26th (Friday) & 28th (Sunday if enough sign up) for hands on classes. Below is a description of the classes. Both subject will be going on at the same time. You choose which one you would like to do.

Class fee is \$160.00 includes everything... plus lunch.

For more info please call. 888-895-7779

**My name is Gerry Romeo and I am the owner of Exotic Woods USA and also an AAW member. I would like the opportunity to offer you and all your chapter members a standing discount of 15% off any orders placed at: [www.exoticwoodsusa.com](http://www.exoticwoodsusa.com). (This includes sale items and free shipping on orders over \$300).**

**Please take a moment to visit [www.exoticwoodsusa.com](http://www.exoticwoodsusa.com) to see the large selection of exotic woods that my site offers. Simply reply to this email and I will provide you with a special coupon code to use when ordering online.**

**If you have any questions, don't hesitate to contact me (or my assistant, Lisa). I look forward to hearing back from you. Thank you for your time.**

**Very truly, Gerry Romeo Exotic Woods USA (631) 651-8651 [info@exoticwoodsusa.com](mailto:info@exoticwoodsusa.com)**

## *January's Mail Bag Continued...*

January and February Specials:

[WWW.DONPENCIL.COM/AAWSPECIALS.htm](http://WWW.DONPENCIL.COM/AAWSPECIALS.htm)

15% off ALL Don Pencil BUFFING Products & Systems  
Use coupon code when you check out: AAW100215B  
(COPY AND PASTE THIS NUMBER)

ADD THIS DISCOUNT TO THE RECENTLY REDUCED BUFFING PRICES AND THE SAVINGS ARE HUGE!!!

ALSO\*\*\* 12" BUFFING ADAPTORS \*\*\*NEW  
ONLY FROM DON PENCIL WOODTURNING  
1.25" x 8 tpi AVAILABLE NOW  
1" x 8 tpi and 33mm x 3.5mm available January 10th

20% off all 12" adapters this month  
Use coupon code AA91120BIG12 when you check out:

Eastsound "Orcas Island" WA 98245 360-376-4586

---

---