



Between Turns

Michigan Association of Woodturners

A chapter of the American Association of Woodturners

VOLUME 24, ISSUE 4

APRIL

2012

CONTACT US:

President:

Tom Mogford

810-629-6176

Vice President:

Bill Magee

734-981-6117

Treasurer:

Tim Morris

810-229-7156

Secretary:

Jeff Scott

734-595-0215

jeffatwayne@yahoo.com

Librarian:

Tim Leright

INSIDE THIS ISSUE:

Meeting Notes	1
Show-N-Tell Table	2
Demo	3-8
Mentors	9
Picnic	10
MAW Newsletter & Website	10

April 2012 MAW Meeting

Ruby Cler demonstrated air brushing at the April meeting.

At the May meeting Keith Fulmer will be demonstrating turning wall hangings.

MAW is Hosting Jimmy Clewes on May 19th & 20th. 50.00 for one day 90.00 for both days.

Lathe Safety: Make sure when attaching wood to a face plate that the surface is flat. Gripping power does not only come from the screws but also



the two flat surfaces against each other.

The MAW presented a demo at Woodcraft on Saturday, April 21st. Thank you for all demonstrators.

The Huron Valley Woodturners will be hosting Dave Hout on June 24th. Dave will be demonstrating metal spinning and bowl turning. Dave demonstrated for the club in the past. If you are interested in metal spinning you should check out his demo.

There will be an auction in July for Wounded Soldiers . The auction is working with

www.usacares.com. If you would like to donate a turned item for the auction your items are due by 6-15-2012. The Auction will be held at Kensington on 7-14-2012. USA Cares charge a 15% management fee on profits from the auction.

A road trip to the Standish Wood Mill was discussed. More details to follow.

Jeff-



Ruby's platter with stencil and shading.

Upcoming Dates

2012 Meetings :

May 6	June 3	July 1	August 12 Picnic
September 9	October 7	November 4	December 2 Holiday Party

2012 Mentor Weekends :

May 12	June 16	July 14	August 18
September 22	October 20	November 17	December 15

-Meetings are held monthly on the first Sunday of each month from 1:00 pm - 3:00 pm

at Paul Beemann's 2075 East Rattalee Lake Rd Holly MI 48442.

-May 19-22 Jimmy Clewes 2-day Demo & 2-day Workshop

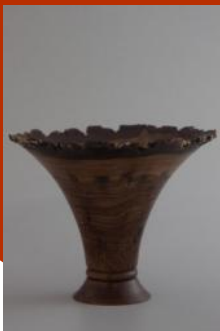
-June 8-10 AAW Symposium, San Jose

-August 3-5 Chicago Symposium



Show and Tell Table

- Dave Pierce - Elm Bowl
- Dave Pierce - Walnut Vase
- Ruby Cler - Air Brushed Skulls
- Don Faulkner - Sycamore Peppermill
- Rod Kannisto - Mallet
- Larry Westphal - Picture Bowl
- Dave Worden - Spalted Maple Bowl with Turquoise Inlay
- Dave Worden - 3 Ash Bowls
- Bill Magee - Bolt Action Pen
- Bill Magee - Amboynas Burl



Please make sure to sign the show and tell sheet so credit can be given.

Ruby Cler Air Brush Demo *Part 1*

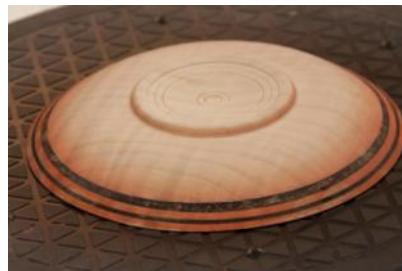
Air Sources: Compressor, CO2 Tank, Air Can, Yourself.

Paints: Wicked, Createx, Golden, Holbein, Auto Air, Any Dye or Stain.

Sources: Hobby Lobby, Michael's, Painter Supply, Automotive Color Supply

Classes: Layback Lenny, Automotive Color Supply (75.00/day), Dru Blair School of Air Brushing, Ruby.

There are "no limits" to what you can do to take it to the next level. Stains and Dyes are not color-fast. They will fade if they are left in the sun light. You can apply designs or create shading with air brushing.



Air brushing can be a creative way to embellish your turnings.

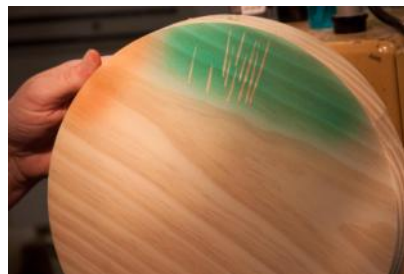
Ruby Cler Air Brush Demo Part 2

Single Stage Air Brush: Pull back the trigger for air and adjust the dial to control the flow of paint.

Two Stage Air Brush: Press down on the trigger to control air flow. Pull back on the trigger to release paint.

Air brushes are good for blending colors. Paints can be mixed prior to painting or you can over lap colors.

Al Stirt – Dies the rims of his bowl and platters and then carves grooves on the rim.



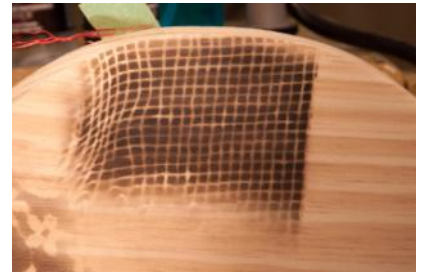
You can use air pressure or air brush needles to control the amount of paint coming out of the airbrush.

Ruby Cler Air Brush Demo *Part 3*

Air brush paint reducer can be used to thin air brush paint.

Applying a dark color to the edge of the rim can add a depth to lighter colored woods.

Embellishments: You can use lace as a stencil. The wider-flatter needles from a cedar tree also work well as a stencil. Three shades of green paint can be applied, while slightly adjusting the needles between colors can add depth.



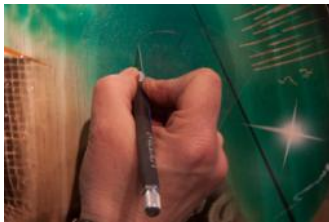
Air brushing can be used to enhance wood grain, spalting, and wood coloring.



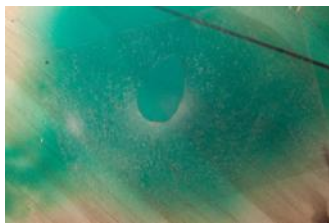
Ruby Cler Air Brush Demo Part 4

Bleach – Applying Wood Bleach prior to painting can lighten or even the color of the wood providing a uniform background to accept color.

Cleaning the Air Brush Reservoir – Dump the paint in your reservoir, add water to rinse out the paint, dump the dirty water, wipe the reservoir with paper towel, and then add water to the reservoir and spray into a container. Repeat until clean. Ruby uses an inexpensive Rubbermaid pitcher with some paper towel in it.



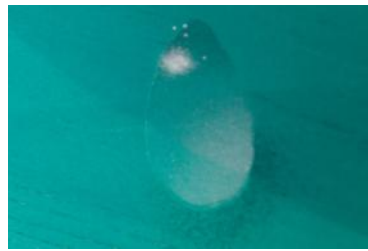
Frisket can be applied as a sheet. You can then cut out a shape such as a rain drop.



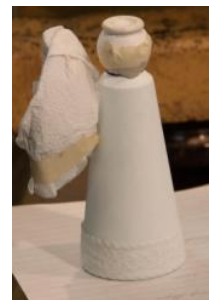
Ruby Cler Air Brush Demo *Part 5*

Wood grain, faux veneer inlay, and spalting can be added to enhance a plain wood. Starburst patterns can be achieved by cutting and bending two pieces of painter tape to make a diamond shape and then spraying the center.

When painting a rain drop or sphere you can use color to show how light and shadows reflect off the surface adding depth to the painting.



When cutting out a shape such as a tear drop from frisket, save the cutouts. You may want to reapply them so that you can spray around the cutout.



You can purchase premade stencils for shapes you use frequently or you may make your own from paper, tape, or frisket.

Ruby Cler Air Brush Demo *Part 6*

Links:

<http://www.createxcolors.com>

<http://www.goldenpaints.com>

<http://www.holbeinhk.com>

<http://www.autoaircolors.com>

<http://www.hobbylobby.com>

<http://www.alstirt.com>

<http://www.michaels.com>

<http://www.painters-supply.com>

<http://www.hobbylobby.com/weekly/coupon.cfm>



Frisket lace, and cut or torn paper are just a few ways to control the area being painted.

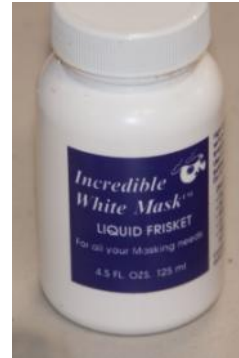


Demonstrators Wanted



Anyone willing to demonstrate at the monthly meeting can contact Tom or Pete to schedule.

We have a number of talented members, so please feel free to share your talents with the club. There are some really interesting projects that members bring in each month for the show and tell table. Many of the club members would be interested in seeing how these projects are created.



Pen turning was a hot topic at the Woodcraft Demo. Looking to try turning your first pen, bring your blank and kit to a mentor workshop.

MAW Mentors

If you would like help getting started in woodturning or help with working out a problem, feel free to call any of the names listed. As always, there is no charge to members of the Michigan Association of Woodturners.

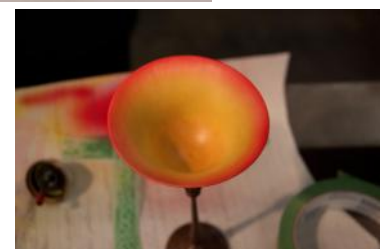
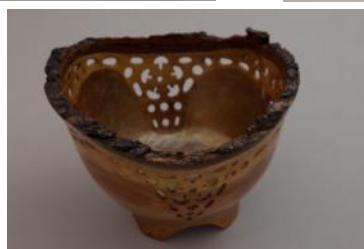
Tom Mogford	810-629-6176
Pete Buccellato	248-634-7622
Bill Magee	734-981-6117
Gary Smith	810-636-7167
Ruby Cler	519-945-0647

Photo's

Photographs for this months "Between-Turns" were provided by Jeff Scott

If you have digital photo's that you would like to have considered for use in the newsletter, please send them to the editor at:

Jeffatwayne@yahoo.com



Mailbag...

If you are planning on attending the Turn-On Chicago 2012 be sure to register soon.



MAW August Picnic 2012

We will be setting up a croquet field at this years picnic.

If you would like to join in the croquet match all you have to do is turn a croquet mallet and ball. The mallets and balls will be on display during the picnic and then used during the match.

The mentor workshops offers an opportunity to turn longer pieces such as the shaft of the mallet, if you only have a Jet Mini Lathe.



Standard croquet mallet size is a 36-inch shaft and mallet heads are usually 9 inches by 2 and one-half inches. Standard croquet balls are 3 5/8".

<http://woodturninglearn.net/articles/bocceball.htm>

The MAW is accepting submissions for the Club Newsletter and Website...

What would you like to read about in the club's newsletter "Between Turns"?

What would you like to see on the club's website <http://www.michiganwoodturner.org>?

Are you willing to write an article for submission please let Jeff know. Possible topics: woodturning, metal turning, wood-working, product reviews, or instructions for your latest project.

With your help we can help make the newsletter and website a better resource for our members.

Send your submissions, suggestions, or requests to Jeff at jeffatwayne@yahoo.com or see me at the meeting.