



Between Turns

Michigan Association of Woodturners

A chapter of the American Association of Woodturners

VOLUME 24, ISSUE 5

MAY 2012

CONTACT US:

President:

Tom Mogford

810-629-6176

Vice President:

Bill Magee

734-981-6117

Treasurer:

Tim Morris

810-229-7156

Secretary:

Jeff Scott

734-595-0215

jeffatwayne@yahoo.com

Librarian:

Tim Leright

INSIDE THIS ISSUE:

Meeting Notes	1
Show-N-Tell Table	2
Keith Fulmer Demo	3-4
Jimmy Clewes	5-7
Picnic	9
MAW Newsletter & Website	9



May 2012 MAW Meeting

Keith Fulmer demonstrated how to turn a candy dish out of a burl at the May meeting.

Chuck Ruby will be demonstrating how he turns his embedded golf balls at the June meeting.

The MAW hosted a Jimmy Clewes demonstration on May 19th & 20th. As promised the demonstration was fun and entertaining. Jimmy turned several pieces including an African Drum Box,



Platter, square lidded box, and a end-grain vase.

The Huron Valley Woodturners will be hosting Dave Hout on June 24th. Dave will be demonstrating metal spinning and bowl turning. Dave demonstrated for the club in the past. If you are interested in metal spinning you should check out his demo.

There will be an auction in July for Wounded Soldiers . The auction is working with www.usacares.com. If you would like to donate a turned item for the auction your items are due by 6-15-2012.

The Auction will be held at Kensington on 7-14-2012. USA Cares charge a 15% management fee on profits from the auction.

In 2013 the MAW will be hosting David Ellsworth. More information to come.

Jeff-



Burl Candy Dish.

Upcoming Dates

2012 Meetings :

June 3	July 1	August 12 Picnic	
September 9	October 7	November 4	December 2 Holiday Party

2012 Mentor Weekends :

June 16	July 14	August 18	
September 22	October 20	November 17	December 15

-Meetings are held monthly on the first Sunday of each month from 1:00 pm - 3:00 pm at Paul Beemann's 2075 East Rattalee Lake Rd Holly MI 48442.

-June 8-10 AAW Symposium, San Jose

-August 3-5 Chicago Symposium

Show and Tell Table



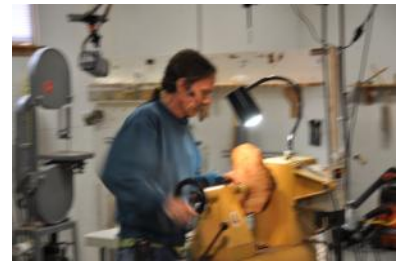
Please be sure to share your name so we can let people know who they can talk to about projects they appreciate.



Please make sure to sign the show and tell sheet so credit can be given.

Keith Fulmer Demo *Part 1*

This is the second time that Keith has demonstrated at the club since I have joined. Sadly I had to miss both times due to work. This time Keith demonstrated how to layout a burl and then how to turn it into a candy dish.



The throw and weight of the Powermatic allow you to turn natural edge pieces with some interesting shapes.

Keith Fulmer Demo *Part 2*

Laying out the burl to show the best figure and turning at a fast enough speed to allow you to smoothly cut through the burl and voids are key to making a striking burl bowl.



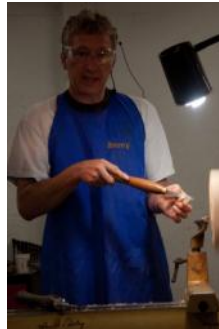
The unique grain pattern of a burl can make help make a striking piece.



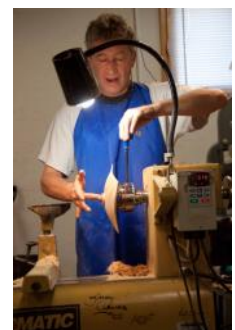
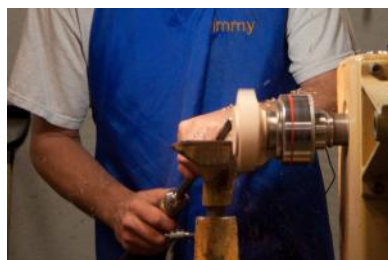
Jimmy Clewes Demo Part 1

Jimmy Clewes spent a few days with the MAW in May. He demonstrated several projects. Some of the key points that Jimmy stressed were use a sharp tool, use a nice piece of wood, turn at an appropriate speed, sharpen your tool, aim for an ascetically pleasing shape.

Here are some of the pictures from Jimmy's demo.



Jimmy demonstrated several grinds and tool that he uses.



Jimmy Clewes Demo *Part 2*

When mounting a piece on the lathe that is not balanced, make an extra effort to stay out of the way in case the piece flies off the lathe. Notice when Jimmy is roughing the burl he stands off to the side and not in front of the piece.



If you did not have the opportunity to work with Jimmy, I highly recommend attending one of his classes.



Jimmy likes the dyes made by Chestnut Colours. Remember colour is properly spelled with a U.

Jimmy Clewes Demo *Part 3*

Links:

<http://www.jimmyclewes.com>

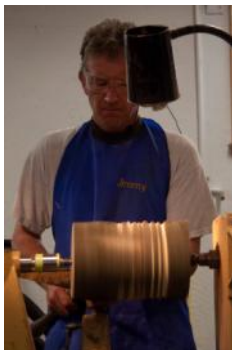
<http://www.riograndecom>

<http://www.chestnutproducts.co.uk>

<http://www.thompsonlathetools.com>



Color can be used to enhance a piece of wood or draw your attention to a certain part of the piece.



Demonstrators Wanted

Anyone willing to demonstrate at the monthly meeting can contact Tom or Bill to schedule.



ented members, so please feel free to share your talents with the club. There are some really interesting projects that members bring in each month for the show and tell table. Many of the club members would be interested in seeing how these projects are created.



We have a number of tal-

After Keith and Jimmy's demonstration I am expecting to see some nice croquet sets for the picnic.

MAW Mentors

If you would like help getting started in woodturning or help with working out a problem, feel free to call any of the names listed. As always, there is no charge to members of the Michigan Association of Woodturners.

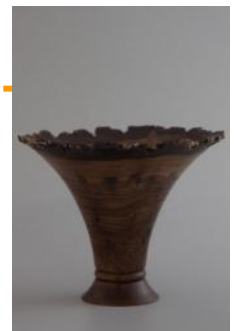
Tom Mogford	810-629-6176
Pete Buccellato	248-634-7622
Bill Magee	734-981-6117
Gary Smith	810-636-7167
Ruby Cler	519-945-0647

Photo's

Photographs for this months "Between-Turns" were provided by Jeff Scott and Bill Magee.

If you have digital photo's that you would like to have considered for use in the newsletter, please send them to the editor at:

Jeffatwayne@yahoo.com



Mailbag...

If you are planning on attending the Turn-On Chicago 2012 be sure to register soon.



MAW August Picnic 2012

We will be setting up a croquet field at this years picnic.

If you would like to join in the croquet match all you have to do is turn a croquet mallet and ball. The mallets and balls will be on display during the picnic and then used during the match.

The mentor workshops offers an opportunity to turn longer pieces such as the shaft of the mallet, if you only have a Jet Mini Lathe.



Standard croquet mallet size is a 36-inch shaft and mallet heads are usually 9 inches by 2 and one-half inches. Standard croquet balls are 3 5/8".

<http://woodturninglearn.net/articles/bocceball.htm>

The MAW is accepting submissions for the Club Newsletter and Website...

What would you like to read about in the club's newsletter "Between Turns"?

What would you like to see on the club's website <http://www.michiganwoodturner.org>?

Are you willing to write an article for submission please let Jeff know. Possible topics: woodturning, metal turning, wood-working, product reviews, or instructions for your latest project.

With your help we can help make the newsletter and website a better resource for our members.

Send your submissions, suggestions, or requests to Jeff at jeffatwayne@yahoo.com or see me at the meeting.