



# Between Turns

Michigan Association of Woodturners

A chapter of the American Association of Woodturners

VOLUME 25, ISSUE 1

JANUARY 2013

CONTACT US:

**President:**  
**Tom Mogford**  
810-629-6176

**Vice President:**  
**Bill Magee**  
734-981-6117

**Treasurer:**  
**Tim Morris**  
810-229-7156

**Secretary:**  
**Jeff Scott**  
734-765-0397  
jeffatwayne@yahoo.com

**Librarian:**  
**Tim Leright**  
734-595-0223

**Assistant Librarian:**  
**David Worden**  
248-625-1385

INSIDE  
THIS ISSUE:

|                          |     |
|--------------------------|-----|
| Meeting Notes            | 1   |
| Show-N-Tell Table        | 2-3 |
| Spindle Demo             | 4-5 |
| Mentors                  | 6   |
| OVWG Turing 2013         | 7   |
| MAW Newsletter & Website | 7   |



## February 2013 Meeting...

This month Ray Frase gave us a presentation on repairing spindles.

The business meeting lasted a little longer than normal this month. Due to rising costs the AAW is having to pass on a portion of the insurance premiums to the clubs. There were two options and the club voted to participate in the 429.00 premium program. More information on this can be found on the AAW website.

The purchase of a AED defibrillator was discussed. More information on this will be shared at the March meeting.

The MAW will be hosting David Ellsworth Memorial Day Weekend. The weekend will start Saturday with a demonstration. Starting Sunday David will be leading several one day hands on workshops. David will be available for up to four workshops if there is demand.

Demo 50.00 Workshops 150.00 per day

If you are not receiving the monthly email please send me an email from you need account and let me know that you have a new address and I will forward to Tim. This will eliminate the chance for typos and more rejected

emails.

The Ohio Valley Woodturners Guilds Biennial Turning 2013 Symposium will be held October 10-13.

The March Demo will cover captured hollowing systems. Several systems will be presented.

Thank you Pete for the cookies. Lynn will be providing a snack for the March meeting. Jeff-



Ray Frase discussing parts of a spindle.

## Upcoming Dates

**Tentative 2013 Meetings :**

|           |            |                          |             |
|-----------|------------|--------------------------|-------------|
| March 3   | April 7    | May 5                    |             |
| June 2    | July 7     | August 4 Picnic          | September 8 |
| October 6 | November 3 | December 1 Holiday Party |             |

**Tentative 2013 Mentor Workshops :**

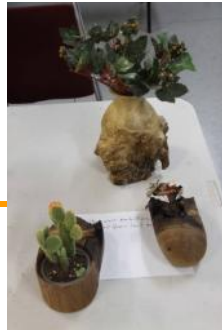
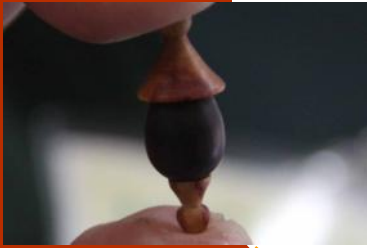
|            |             |             |              |
|------------|-------------|-------------|--------------|
| March 16   | April 20    | May 18      |              |
| June 15    | July 20     | August 17   | September 21 |
| October 19 | November 16 | December 14 |              |

-Meetings are held monthly on the first Sunday of each month from 1:00 pm - 3:00 pm at Paul Beemann's 2075 East Rattalee Lake Rd Holly MI 48442.

- May 25th David Ellsworth Demo
- Workshops on following days
- June 27th AAW Symposium
- October 10-13 Turning 2013

# Show and Tell Table

- Bill Magee - Bottle Stoppers
- Tom Mogford - Tilted Twig pot
- Dan Sykes - Birdhouse Earring



Please make sure to sign the show and tell sheet so credit can be given.

# Show and Tell Table

- Dennis Stange - Trees
- Dennis Stange - Custom Hunter Tool
- Dan Sykes - Jewelry Box
- Ruby Cler - Bowls of Eggs and Spheres
- Ruby Cler - Off Center Pieces
- Ruby Cler - Textured Black Rimmed Bowl
- Dave Merce - Crotch Bowl with Photo
- Dave Worden - Maple Bowl
- Gary Smith - MAW Logo
- John Fontana - Walnut Vase
- John Fontana - Cedar Vase



The \$5.00 for February was for a spindle lathe.

## *Ray Frase Spindle Repair Demo*

Ray Frase joined us again in February. This time Ray presented a demonstration on repairing spindles. We talked about where spindles break. If a spindle splits down the middle you may be able to glue it together and sand it. When this happens it is typically easier to turn a duplicate spindle to replace the broken one. Often the tenon breaks off. This can usually be repaired. When turning a new spindle Ray often provides it finished sanded but not finished. This will allow the person he is turning the spindle for to finish it to match their project.

When duplicating a spindle Ray uses a stand to hold the old spindle behind the turning. This makes it easier to both visualize the final shape as well as taking measurements.

Spindles will usually break at the tenon. The easiest way to fix the spindle is to remove the tenon and insert a new one. A dowel can be turned for this. Measure the diameter and length of the exposed tenon. Turn a tenon or dowel that is the same diameter or slightly smaller and twice as long the exposed tenon. Ray's method uses two chucks and a spindle steady rest.

Cut off or sand off any of the broken tenon.

You can turn a custom donut shaped jam chuck to match the spindle you are working on. Turn the whole just large enough to fit the end of the spindle with the missing tenon. Turn a tenon on the donut shaped jam chuck so that it will fit in a chuck. Attach one of your chucks on your live center holding the donut. Attach your other chuck on the headstock. Mount the remaining tenon in the chuck on your head stock. Fit the broken tenon end of the spindle in the jam chuck. You can now set up your spindle steady rest.



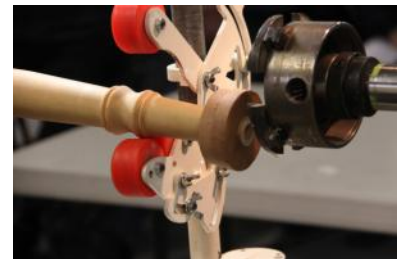
***Repairing a spindle can be a useful skill. Rays donut jam chuck provides a simplified way to make some common repairs..***

## Ray Frase Spindle Repair Demo

Remove the live center, chuck, and donut shaped jam chuck from your tailstock. Drill a hole to accept the new tenon/dowel that is slightly larger to allow room for glue or epoxy. Ray used a drill bit with a MT2 end so a Jacobs chuck was not required.

If you want to make a stronger spindle you can drill a whole to accept a 8p nail into the recess in the spindle and one end of the dowel. You can epoxy the nail into the spindle, cut off the head of the nail, and then epoxy the dowel onto the nail and into the recess.

If you are restoring a spindle for someone restoring antique furniture, you should confirm that a metal reinforcement is acceptable.



# Demonstrators Wanted



Anyone willing to demonstrate at the monthly meeting can contact Tom or Pete to schedule.

We have a number of talented members, so please feel free to share your talents with the club. There are some really interesting projects that members bring in each month for the show and tell table. Many of the club members would be interested in seeing how these projects are created.



*Check out the new DVD's in the library.*

## MAW Mentors

If you would like help getting started in woodturning or help with working out a problem, feel free to call any of the names listed. As always, there is no charge to members of the Michigan Association of Woodturners.

|                       |              |
|-----------------------|--------------|
| Tom Mogford .....     | 810-629-6176 |
| Pete Buccellato ..... | 248-634-7622 |
| Bill Magee .....      | 734-981-6117 |
| Gary Smith .....      | 810-636-7167 |
| Ruby Cler .....       | 519-945-0647 |

## Photo's

Photographs for this months "Between-Turns" were provided by Jeff Scott

If you have digital photo's that you would like to have considered for use in the newsletter, please send them to the editor at:

Jeffatwayne@yahoo.com



## Mailbag...

What would you like to see added to the news letter or website? Are you willing to write a techniques document or other article? See Jeff at the meeting or send a email to [jeffatwayne@yahoo.com](mailto:jeffatwayne@yahoo.com)

### Ohio Valley Woodturning Guild - Turning 2013

Registration has opened for the OVWG Turning 2013 Regional Symposium.

October 10-13, 2013

<http://www.ovwg.org/2013-symposium-2/2013-symposium/>

Featured Presenters:

Nick Agar

Christian Burchard

Michael Hosaluk

Steven Kennard

Ray Key

Glenn Lucas



## Ohio Valley Woodturners Guild

### The MAW is accepting submissions for the Club Newsletter and Website...

What would you like to read about in the club's newsletter "Between Turns"?

What would you like to see on the club's website <http://www.michiganwoodturner.org>?

Are you willing to write an article for submission please let Jeff know. Possible topics: woodturning, metal turning, wood-working, product reviews, or instructions for your latest project.

With your help we can help make the newsletter and website a better resource for our members.

Send your submissions, suggestions, or requests to Jeff at [jeffatwayne@yahoo.com](mailto:jeffatwayne@yahoo.com) or see me at the meeting.