



CONTACT US:

President:
Tom Mogford
810-629-6176

Vice President:
Bill Magee
734-981-6117

Treasurer:
Gene Laveroni
248-366-1963

Secretary:
Jeff Scott
734-765-0397
jeffatwayne@yahoo.com

Librarian:
David Worden
248-917-2822

Assistant Librarian:
Tim Leright
734-595-0223

INSIDE THIS ISSUE:

Meeting Notes	1
Annual Picnic	2
New Location Search	4
Open Turning	6
Bowl Decorating	7



Between Turns

Michigan Association of Woodturners

A chapter of the American Association of Woodturners

VOLUME 27, ISSUE 8

AUGUST 2015

August 2015

August was our annual picnic. Thank you Roby for coordinating the food and cooking some great burgers!

Gene Laveroni will be demonstrating inside out turnings at the September meeting.

There will be open turning session 9:00am Saturday August 15, 2015 and 9:00am Saturday August 22, 2015 we will be making bowls for the Eastern Michigan Food Bank Empty Bowls project. You can turn your own bowls and bring them to the September 13th meeting. People who donate bowls will re-

ceive a ticket for them and a guest for the soup dinner.



The Ohio Valley Woodturning Guild Turning 2015 Symposium will be held October 9-11, 2015 at the Higher Ground Conference Center in Harrison, IN.

We are looking for demonstrators for the end of the year. Please talk to Tom if you would be willing to demonstrate.



Congratulations Kevin on your second Picnic Top Competition victory!

Upcoming Dates

2015 Meetings :

September 6, October 4, November 1, December 6 Holiday Party

2015 Open Turning :

August 15, August 22, September 19, October 17, November 14, December 19

-Meetings are held monthly on the first Sunday of each month from 1:00 pm - 3:00 pm at Paul Beemann's 2075 East Rattalee Lake Rd Holly MI 48442.

-OVWG Symposium October 9-11

Instant Gallery

Thank you everyone that came to the annual picnic. It was nice spending the time socializing. Hopefully next year those that did not attend this year will be able to attend.



Annual Picnic



Three years of winners battling it out.



Demonstrators Wanted



Anyone willing to demonstrate at the monthly meeting can contact Tom or Pete to schedule.

We have a number of talented members, so please feel free to share your talents with the club. There are some really interesting projects that members bring in each month for the show and tell table. Many of the club members would be interested in seeing how these projects are created.



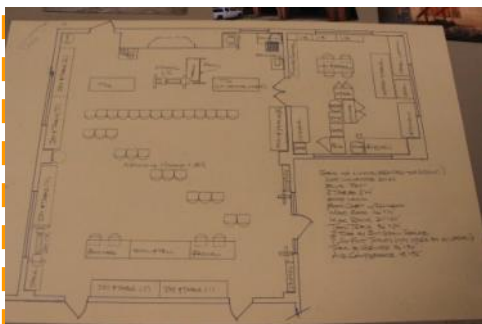
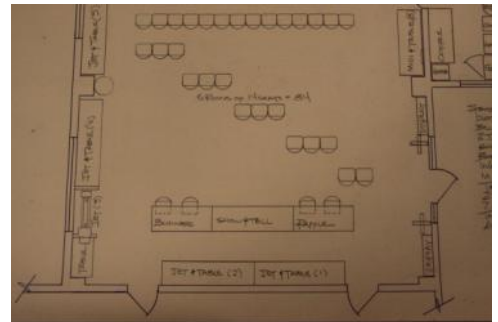
If you are aware of an available building or land the club may be able to purchase or use please let an officer know.

New Location Search

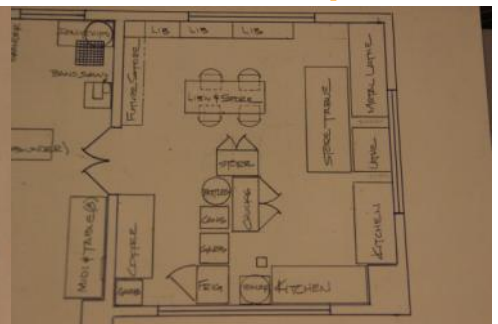
A site visit was performed at Bay Court. Dave Worden drew up a possible layout that would fit all of our equipment. The location could have a main room for the meeting and turning equipment. There is a second room which could house a kitchen area, club store, and the club library.

The club voted to proceed with discussing costs and timelines with bay Court. Rent and utility costs need to be discussed as well as what parts of the build-out the club can perform and which parts we will need to pay the parks contractors to complete.

Members should continue to look for additional leads on a new location please provide details to a board member and we will distribute it to the committee leaders.



Items w/o a home (BESIDES THE MAW!)
 DUST COLLECTOR 24"x24"
 BLUE JET
 2 TABLES 2'x4'
 SHOP VACS
 BOOCASE w/ ICHABOD
 WOOD RACK 46"x14"
 MISC RACK 24"x24"
 TOOL TABLE 36"x24"
 2 TUBS BY END GRAIN SEALER
 7 SIX FOOT TABLES (MAY STORE BY M-LATHE)
 TABLE BY GRINDER 46"x30"
 AIR COMPRESSOR 48"x32"



Coring System

Come to a mentor workshop and take advantage of the clubs Coring System. Coring a bowl allows you to turn several bowls out of a single piece of wood.

You can see Dave made 4 bowls and another small inner blank from his piece of wood. Turning a bowl the standard way would have resulted in one bowl.

This is useful when turning figured or expensive wood as you can turn multiple bowls for the cost of one bowl blank.

The Coring system is for the Powermatic lathe. Sign up with Dave Worden if you want to use the Coring System

Dave Worden
248-917-2822.



Making a flat spot on the tool handle will stop the tool from rolling off of the lathe bed or work table.

MAW Open Turning

The Michigan Association of Woodturners sponsors a monthly Open Turning event for members. The workshop is typically held the second Saturday following the meeting. Check the Club Calendar for specific dates. This is a time for you to come to the club bring a piece of wood and turn something. People are there

to answer questions and provide guidance. Feel free to try something new or bring in a piece you are having issues with. Cost is \$10.00 and a lunch will be provided.

Tom Mogford	810-629-6176
Pete Buccellato	248-634-7622
Bill Magee	734-981-6117

Photo's

If you have digital photo's that you would like to have considered for use in the newsletter, please send them to the editor at:

Jeffatwayne@yahoo.com



I don't turn a lot of bowls each year, perhaps 12 to 15 at the most, and often they are small bowls that are never finished because they were used to test a tool or show a student how to turn a bowl. I seldom apply any decoration to a bowl, but occasionally I do get an urge to try something different. This story is about such an occasion.

Nearly two years ago, I had rough-turned and cored a nice 10 inch maple bowl. I decided to finish it and do some form of decoration on it. The decision was to put a circle of 24 dots of a contrasting wood on the top of the rim of the bowl. So, when I finished turning the bowl, I left the top of the rim wider than I normally would.

This was shortly after I acquired one of Richard Benham's Rim Chucks so I tried using the Rim Chuck to turn the foot of this rough turned bowl to fit my Nova Chuck with large jaws. The bowl was a bit warped on top and somewhat out of round; however, it fit nicely into the Rim Chuck so I could turn the foot to fit my chuck (see the photo) below.

I never trust any of the reverse-chucking devices completely and normally give additional support with my cup-shaped live center as shown in the photo.



Using a Rim chuck to turn the foot of my rough turned bowl.

With the foot turned to fit into the chuck, I mounted the bowl in the chuck and final turned the outside and the inside. Incidentally, I used the cup-shaped live center to support the bowl in the Nova Chuck also. This allows more aggressive turning without concern of losing the bowl from the chuck.

**Turning the outside of the bowl when mounted in the Nova Chuck.**

This cup-shaped live center doesn't mar the bowl's surface when used as support for the chuck.

I used some reddish colored wood that we had in inventory. I don't know its name because it came from a scrapped-out crate. So I just call it "Crate Wood". This board was 3/4" thick. I used a plug cutter to cut enough plugs to fill 24 holes around the rim of the bowl.

I then used a Forstner Drill in the Oneway Drill Wizard to drill the 24 equally spaced holes, the maximum indexing positions on my Nova DVR 3000. Actually, I glued in a plug each time I drilled a hole. The glue used was Tite-Bond 2, which is the glue that I use almost exclusively. I've never had a glue joint fail with this glue, which is a good reason to continue its use.



Drilling the 24 equally-spaced holes with the Oneway Drill Wizard and my 3/8" drive drill motor that had to be purchased to fit the collar of the Drill Wizard.

Once the glue was dry, I turned away the tops of the plugs, finish-sanded, and applied finish to the inside and outside of the bowl.



A view of the bowl from the side after sanding and finishing.



A view of the top of the bowl while still mounted on the lathe.

The bowl was now ready to reverse and turn the foot. I would have normally reversed the bowl onto my vacuum plate made by Vicmarc that I've had for a number of years. However, the Rim Chuck was easier to set up and worked very well. Again, for safety sake, I used tailstock support; something that I do with any reverse turning method, whether it is a jam chuck, a vacuum chuck, a Longworth Chuck, or the Rim Chuck.



Printed with permission. <http://www.morewoodturningmagazine.com>

Turning the foot of the bowl. The tailstock was removed for final turning away of the little tenon in the center and for final sanding.



I was pleased with the bowl and so was the person who purchased it.

If you haven't tried decorating one of your bowls, perhaps it is time that you gave it a try. This was a very simple method, but only one of many ways to enhance the appearance of a fairly plain piece of wood. Give it a try.