



Between Turns

Michigan Association of Woodturners

A chapter of the American Association of Woodturners

VOLUME 27, ISSUE 7

JULY 2015

CONTACT US:

President:

Tom Mogford
810-629-6176

Vice President:

Bill Magee
734-981-6117

Treasurer:

Gene Laveroni
248-366-1963

Secretary:

Jeff Scott
734-765-0397
jeffatwayne@yahoo.com

Librarian:

David Worden
248-917-2822

Assistant Librarian:

Tim Lerright
734-595-0223

INSIDE

THIS ISSUE:

Meeting Notes	1
Instant Gallery	2
Demo	3
Mentor Workshop	6



July 2015

Ted Gozdziwski demonstrated turning a sphere at the July meeting. This was the first part demo for making a Kendama game.

August will be our annual picnic. Roby is again coordinating food. Please contact Roby at 734-546-2989 and let her know what you are bringing.

The Ohio Valley Woodturning Guild Turning 2015 Symposium will be held October 9-11, 2015 at the Higher Ground Conference Center in Harrison, IN.

We are looking for demonstrators for the end of the year. Please talk to Tom if you would be willing to demonstrate.



September meeting: Bring in bowls for Eastern Food Bank of Michigan. Bowls can be turned and the turn and a guest will be given a free ticket to the soup dinner.

August's Mentoring workshop will be held on the 15th.

Dave discussed the direction of the club and the Bay Court site visitation. The club voted to continue to operate the way we do now possibly adding additional demonstrations and open turning days. We voted to start discussions with Bay Court to determine what the costs and build out process would be.



Ted's Spheres

Upcoming Dates

2015 Meetings :

August 2 Picnic,

September 6, October 4, November 1, December 6 Holiday Party

2015 Mentor Workshops :

August 15, September 19, October 17, November 14, December 19

-Meetings are held monthly on the first Sunday of each month from 1:00 pm - 3:00 pm at Paul Beemann's 2075 East Rattalee Lake Rd Holly MI 48442.

-OVWG Symposium October 9-11

- Bill Magee* *Spalted Tamarind Pet Urn*
- Dennis Stange* *Vessel of Illusion*
- Dennis Stange* *Cherry Root Ball Hollow Form*
- Peter Stewart* *Maple and Cherry Flying Saucer*
- Peter Stewart* *Black Walnut hat Stand*
- Chuck Ruby* *Pedestal Dish*

Instant Gallery



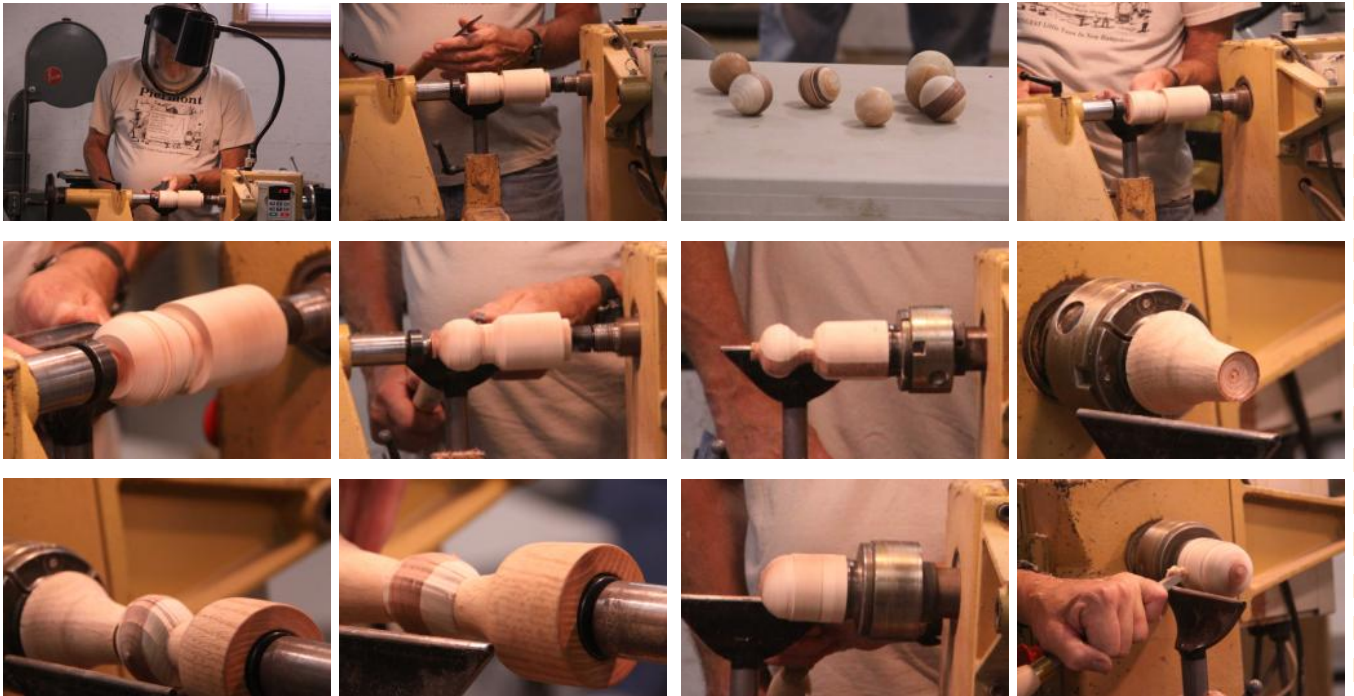
Please sign in your turnings so credit can be given.

Ted Gozdzialski - Spheres

Ted demonstrated the first part of creating a Kendama game which is how to turn a sphere. The handle and cups will be turned at another demonstration later this year. This project is started by turning a 2" sphere. Start by mounting a spindle between centers.

The spindle Ted used was big enough to turn two spheres. Turn a tenon at the end to match your chuck. Mark 2" length for each sphere. Cut a 2" depth cut between the spheres. Use a skew or spindle gouge to turn the spheres. Make sure that you cut from the top of the ball down so that you have supported fibers.

Mount the spindle in the chuck. Turn off spigot on the end of the spindle. Part off the sphere. Turn a set of cup chucks to hold the sphere. (Don Doyle sells a set of rubber chucky sphere chucks.)



Don Doyle sells a rubber sphere chuck in three different sizes. One is held in your chuck and the other screws on to your threaded live center.

<http://www.rubberchucky.com/shop.php?SphereC>



Ted Gozdzialski - Spheres

Mount the sphere in the cup chucks so the spigots stick out towards you. Make sure that the tailstock cup chuck spins freely. Depending on the live center that you have your tail stock cup chuck will either fit over your live center point or you can make one that threads onto your live center if it is threaded.

Turn away the spigots left on the sphere by lightly turning away the ghost images. Mark the center line. Rotate the sphere 90 degrees. Turn away the ghost images. Mark the center line. Rotate the sphere another 90 degrees.

Continue doing this until you have reached a sphere. Sand your sphere. Your sand paper will bounce around if your sphere is not perfectly round. Rotate the sphere 90 degrees and sand again. Rotate the sphere and sand again. Continue this process as you progress through the grits.

Ted turned a second sphere when the first was completed.



We are looking for demonstrators for September, October, November, and January.

Demonstrators Wanted



Anyone willing to demonstrate at the monthly meeting can contact Tom or Pete to schedule.

We have a number of talented members, so please feel free to share your talents with the club. There are some really interesting projects that members bring in each month for the show and tell table. Many of the club members would be interested in seeing how these projects are created.



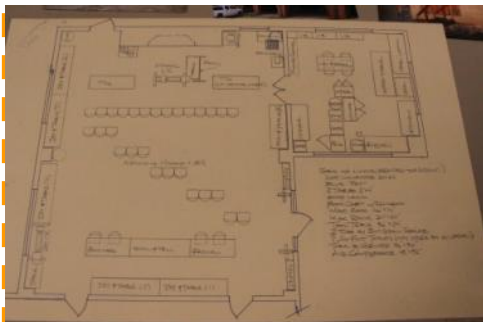
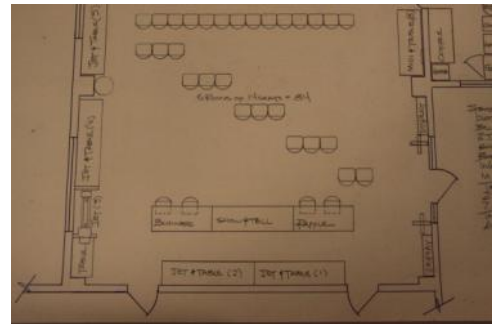
If you are aware of an available building or land the club may be able to purchase or use please let an officer know.

New Location Search

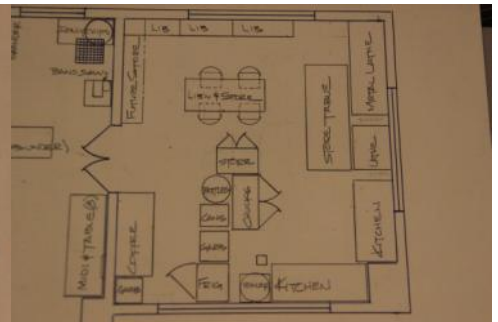
A site visit was performed at Bay Court. Dave Worden drew up a possible layout that would fit all of our equipment. The location could have a main room for the meeting and turning equipment. There is a second room which could house a kitchen area, club store, and the club library.

The club voted to proceed with discussing costs and timelines with bay Court. Rent and utility costs need to be discussed as well as what parts of the build-out the club can perform and which parts we will need to pay the parks contractors to complete.

Members should continue to look for additional leads on a new location please provide details to a board member and we will distribute it to the committee leaders.



IF ONLY W/ A HOME (BESIDES THE MAN!)
DUST COLLECTOR 24"x24"
BLUE JET
2 TABLES 2'x4'
SHOP VACS
300L CABINET w/ ICHABOD
WOOD RACK 46"x14"
MISC RACK 24"x24"
TOOL TABLE 36"x24"
2 TUBS BY END GRAIN SEALER
7 SIX FOOT TABLES (MAY STORE BY M-LATHE)
TABLE BY GRINDER 46"x30"
AIR COMPRESSOR 48"x32"



Coring System

Come to a mentor workshop and take advantage of the clubs Coring System. Coring a bowl allows you to turn several bowls out of a single piece of wood.

You can see Dave made 4 bowls and another small inner blank from his piece of wood. Turning a bowl the standard way would have resulted in one bowl.

This is useful when turning figured or expensive wood as you can turn multiple bowls for the cost of one bowl blank.

The Coring system is for the Powermatic lathe. Sign up with Dave Worden if you want to use the Coring System

Dave Worden
248-917-2822.



Making a flat spot on the tool handle will stop the tool from rolling off of the lathe bed or work table.

MAW Mentor Workshop

The Michigan Association of Woodturners sponsors a Mentor Workshop for members. The workshop is typically held the second Saturday following the meeting. Check the Club Calendar for specific dates. This is a time for you to come to the club bring a piece of wood and turn something. People are there to

answer questions and provide guidance. Feel free to try something new or bring in a piece you are having issues with. Cost is \$10.00 and a lunch will be provided.

- | | |
|-----------------------|--------------|
| Tom Mogford | 810-629-6176 |
| Pete Buccellato | 248-634-7622 |
| Bill Magee | 734-981-6117 |

Photo's

If you have digital photo's that you would like to have considered for use in the newsletter, please send them to the editor at:

Jeffatwayne@yahoo.com

