



# Between Turns

Michigan Association of Woodturners

A chapter of the American Association of Woodturners

VOLUME 21, ISSUE 1

JANUARY 2009

## CONTACT US

### President:

Tom Mogford

810-629-6176

### Vice President:

Pete Buccellato

248-634-7622

### Treasurer:

Tim Morris

810-229-7156

### Secretary:

Jeff Scott

734-595-0215

### Librarian:

Tim Leright

734-595-0223

## INSIDE THIS ISSUE:

Pete's Demo 1

Show-N-Tell Table 2

Mentors 3

## Pete Buccellato Demonstration

For the January meeting Pete demonstrated turning icicles and finials for Christmas ornaments.

A finial is used to add a decorative element to emphasize the apex at the top of the ornament. Just like the ones used on gables or roofs, building corners, and curtain rods.

An icicle is similar to finial except that it extends from the bottom of the ornament, just like water from melting snow that re-freezes.



Pete began by working on the icicle. With a piece of maple roughly 3/4 of an inch in diameter and 6 inches in length mounted in the pin jaws of a



**Pete Buccellato demonstrating the techniques and process used for turning finials.**

chuck. The bottom end taper is turned first. After the bottom taper is turned to the desired shape and size it is finish sanded. The bottom stem is then turned

and sanded. Make sure to support the back of the stem with your hand so that it does not break. Each section is turned and sanded in order to provide support. Otherwise the stem would easily snap. The second taper is then turned and sanded. This taper can either be the same size or slightly larger if you want to taper the entire icicle. The second stem is then turned and sanded. Pete makes the second stem twice the length of the bottom stem. A third taper is then turned and sanded. The collar is then turned and sanded, with an under cut on the tenon side. Finally a tenon is cut to size. Pete uses a rounded caliper to size the tenon to the opening in the ornament.

Continued on page 4.

## 2009 Meetings

January 4

April 5

July 12

October 4

February 1

May 3

August 2

November 1

March 8

June 7

September 13

December 6

Meetings are typically held monthly on the first Sunday of each month from 1:00 p.m. - 3:00 p.m. at the workshop of Dave Gordon 10621 Milford Road Holly MI 48442.

# Show and Tell Table

A number of interesting projects were brought in for our January meeting. Several platters, bowls, boxes, and another kaleidoscope



*From Top Left,  
Bowl, Goblet,  
Platter,  
Kaleidoscope,  
Platter, Egg Box,  
and Bowl.*

*A box with an  
insert is on the  
next page.*



## University of Michigan Museum Project

**Natural  
Edge Bowl**



We are seeing more of the turning projects for the University of Michigan Museum project coming in. Here

is one natural edge bowl.



# Demonstrators Wanted



Anyone wishing to do a demonstration at a monthly meeting, please contact Tom or Pete to setup and schedule a

demonstration.

We have a number of talented members, so please feel free to share your talents with the club. There are some really interesting projects that members bring in each month for the show and tell table. Many of the club members would be

interested in seeing how these projects are created.

## MAW Mentors

If you would like help getting started in woodturning or help with working out a problem, feel free to call any of the names listed. As always, there is NO CHARGE to members of the Michigan Association of Woodturners.

Tom Mogford .....	810-629-6176
Pete Buccellato .....	248-634-7622
Bill Magee (Pen Turning) .....	734-981-6117
John Becker (Mugs, Goblets, & Pipes) ...	248-851-0437
Gary Smith .....	810-636-7167

*Do you have a question about your current turning project?*

## Photo's

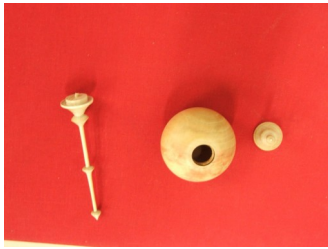
Photographs for this months "Between-Turns" were provided by Jeff Scott.

them to the editor at:  
Jeffatwayne@yahoo.com

If you have digital photo's that you would like to have considered for use in the newsletter, please send



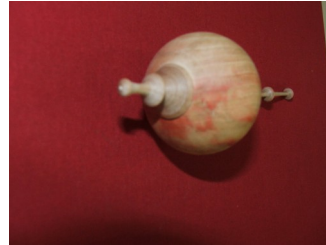
# Pete's Demonstration Continued...



The icicle is then carefully parted off, making sure to catch the icicle in your hand so that it does not hit the lathe or floor and break.

The Finial is then turned. The end is trued up and the top taper is

turned and sanded. After the top taper is sanded a pin vice is used to drill a hole for an eyelet. Eyelet can either be purchased or custom made with twisted wire. After the finial is trued to the desired shape a undercut collar is turned and sanded. Finally a tenon is turned to the correct shape using a rounded caliper to cut to the correct diameter. The icicle and finial are attached with medium CA glue.



*“Do you have a question about tools or equipment? Bring it up at the meeting someone else probably has the same question.”*

## Dust Masks

One of the topics that we talked about at the meeting is what dust masks members use.



Two of the common masks were the Trend Air Shield and the Dust Be Gone Mask. The Trend AIR-SHIELD has a front face shield and a powered 2 micron air filter. A second 4 hour battery can be added to increase the run time to 8 hours. The Dust Be Gone mask filters particles up to 3 microns and is washable.



## RiverLogs Inc.

Dennis of RiverLogs Inc. a Florida based company specializing in reclaimed sunken (Sinker) logs from Florida's past contacted the club. They offer recovered logs that have been underwater for 150-200 years and often contain amazing colors that are not found naturally. Woods available include: Mahogany, Cherry, Birch, Heart Pine, Cedar, and Cypress. Pieces of wood can

be cut and milled to size. Ranging in size from a pen blank to a 30x30x6 board. A pen blank sampler kit with one of each species is available for \$8.50 plus shipping.

Dennis can be reached at:  
RiverLogsync@aol.com  
1-386-338-1650.  
<http://riverlogs123.com/home>

